

HIGH TEMPERATURE EVENTS



Warming trends and the continued lengthening of summers will lead to an increase in high-temperature events, resulting in numerous adverse effects. The CWA issues high-temperature alerts when the daily maximum temperature exceeds 36°C. Per CMIP6 projections (Figure), the number of high-temperature days (defined as days with daily maximum temperatures equal to or above 36°C) will continue to rise in Taiwan's low-elevation areas (those below 500 meters). Under the worst-case SSP5-8.5 scenario, the average increase will be 73.6 days by the end of this century. Areas with larger increases in hot days will include the Taipei Basin, areas near the mountains in central Taiwan, and areas near the mountains in Kaohsiung and Pingtung, particularly in valleys (river valleys and longitudinal valleys), due to a lack of sea breeze regulation and closed terrain.

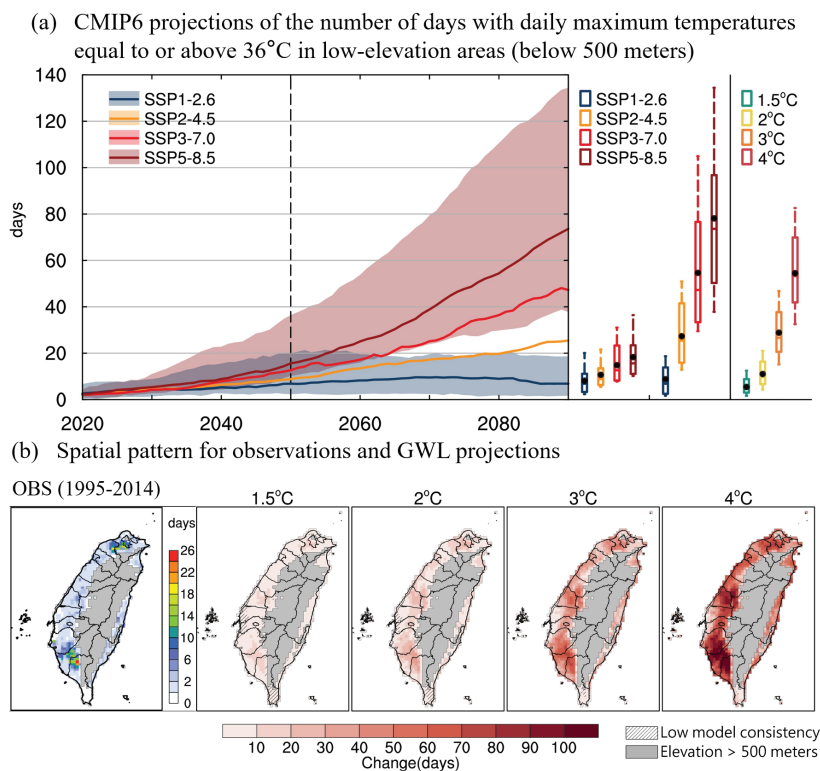


Figure
CMIP6 projections of the number of days with daily maximum temperatures equal to or above 36°C in low-elevation areas (below 500 meters)

