



Center for Climate Change Adaptation: the national hub for climate change adaptation

Yoshifumi Masago

Center for Climate Change Adaptation
National Institute for Environmental Studies



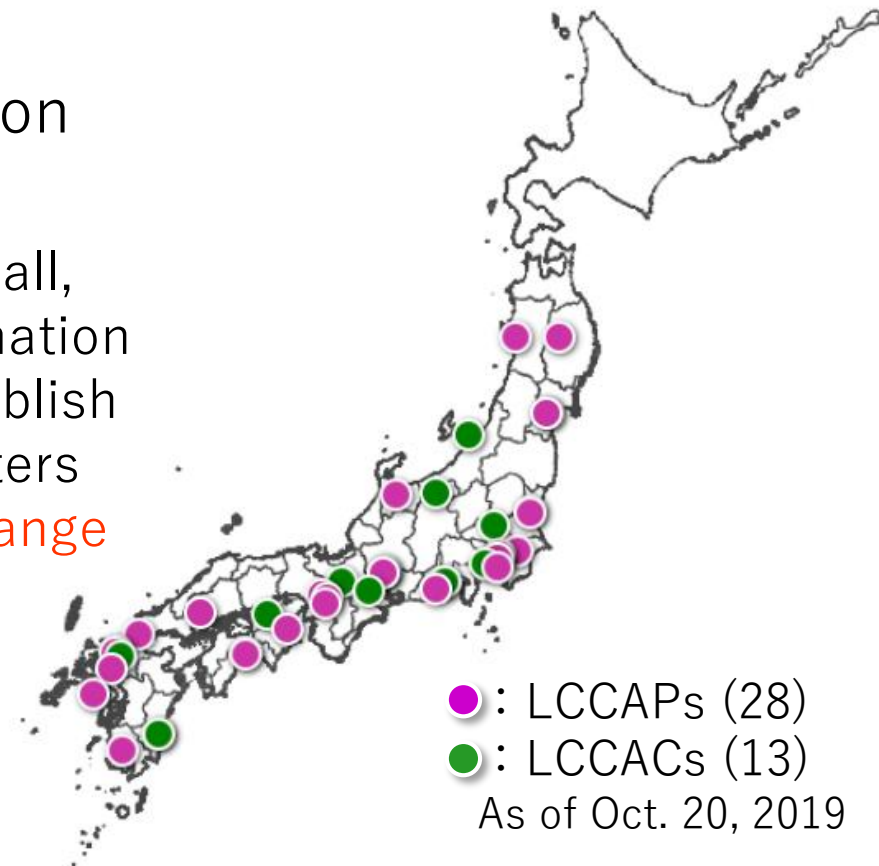
Climate Change Adaptation Act

- Put into effect on December 1st, 2018
- Both Houses passed the bill unanimously



Climate Change Adaptation Act

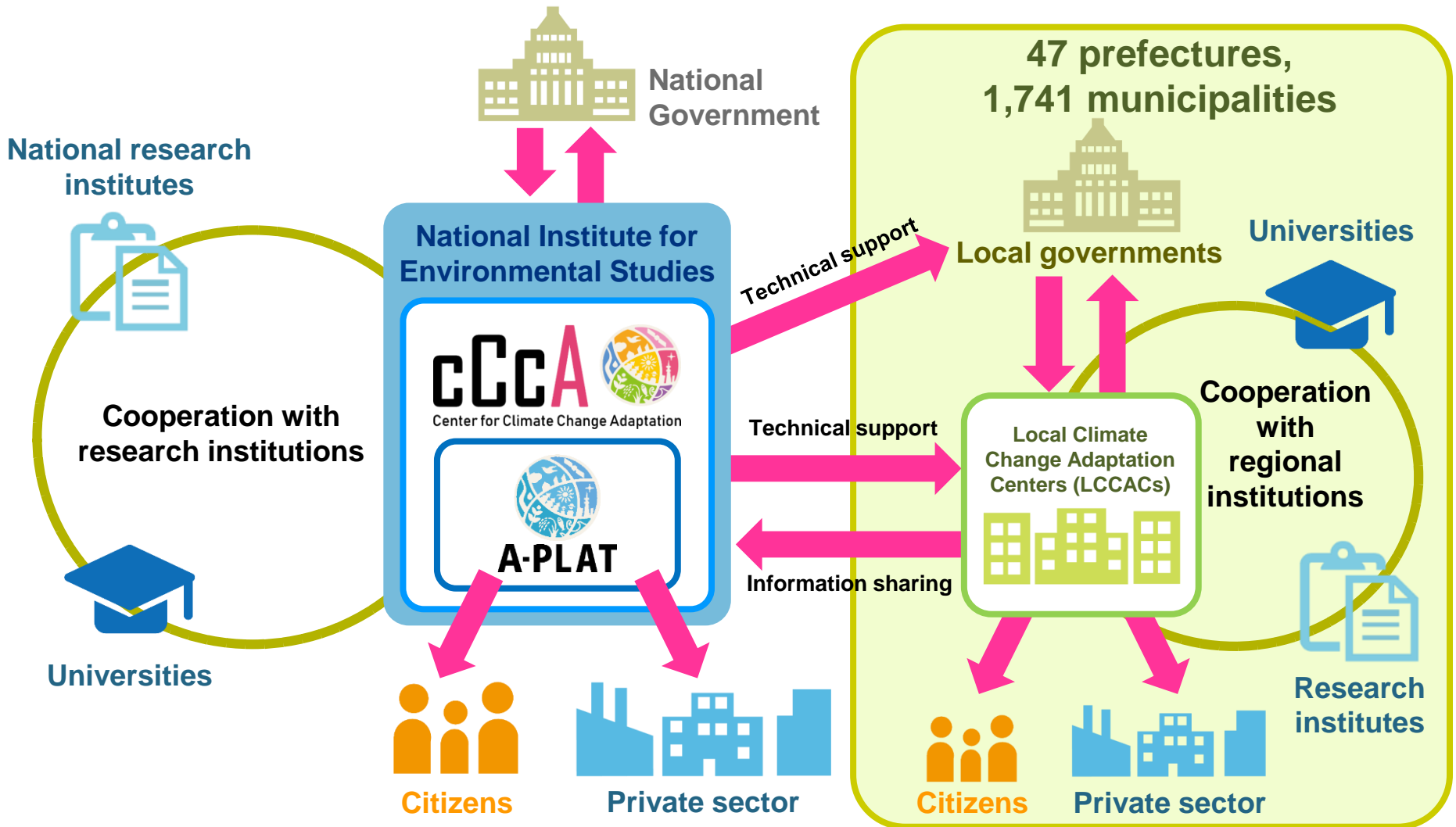
- Local Climate Change Adaptation Plans (Article 12)
 - Prefectures and municipalities shall, either independently or in coordination with each other, endeavor to formulate a **local climate change adaptation plan (LCCAP)**.
- Local Climate Change Adaptation Centers (Article 13)
 - Prefectures and municipalities shall, either independently or in coordination with each other, endeavor to establish systems that will function as centers (referred to as "**Local Climate Change Adaptation Centers (LCCAC)**").



Climate Change Adaptation Act

- Development of domestic adaptation information infrastructure (Article 11)
 - Appoint NIES as the **core of information infrastructure for adaptation**
 - NIES shall:
 - collect, organize, analyze and provide information related to climate change impacts and adaptation; and
 - provide technical advice and support to local governments, local climate change adaptation centers and other institutions
 - NIES will:
 - cooperate with other research institutions; and
 - foster public participation in collecting information about climate change impacts

Roles of CCCA under the Act

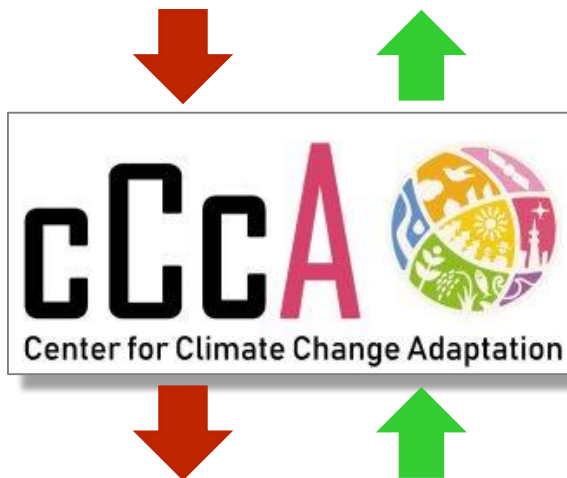


Center for Climate Change Adaptation:

Bridge between National and Local Adaptation Policies

National level

- Lead research projects with relevant institutes
- Collect and provide data and information
- Contribute to National Impact Assessment & NAP

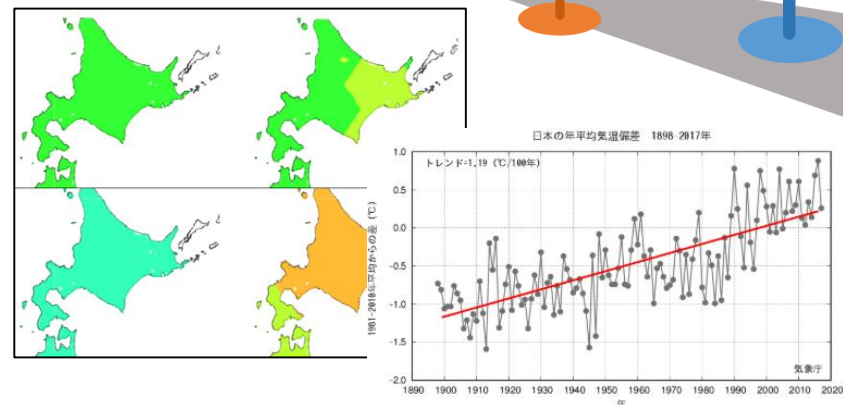
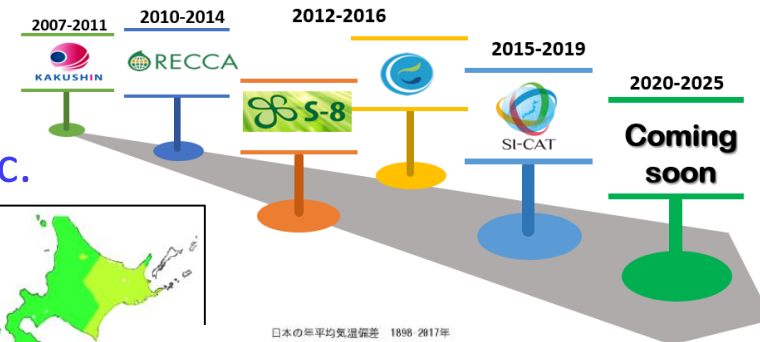


Local level

- Provide information via A-PLAT
- Support in developing LCCAPs
- Collaborate with LCCACs

Accumulate

- data
- information
- knowledge
- experience etc.



Climate Change Adaptation Information Platform (A-PLAT)

- Launched in Aug. 2016
- "One-stop" online resource hub on adaptation to climate change impacts in Japan
 - Climate risk information/data
 - NAP, LCCAPs, LCCACs
 - Guidelines, manuals
 - Workshops, seminars
 - Best practices, interview
 - Activities in private sectors
 - Information for general public
 - Events

A-PLAT CLIMATE CHANGE ADAPTATION INFORMATION PLATFORM
気候変動適応情報プラットフォーム

HOME About this site Japanese

Climate Change Adaptation National Adaptation Plan of Japan Impact & Adaptation Let's Adapt! International Action

A-PLAT CLIMATE CHANGE ADAPTATION INFORMATION PLATFORM, JAPAN
気候変動適応情報プラットフォーム

Sunrise at Sakurajima, Kagoshima

INTERVIEW
local adaptation planning and good practices.

coming soon
Adapting to Climate Change

NEWS & ACTIVITY REPORT [ARCHIVE](#)

AP-PLAT was officially launched NEW

Sunday, June 16, 2019 in Karuizawa, Nagano
Having opportunity to hold the G20 Ministerial Meeting on Energy Transitions and Global Environment for Sustainable Growth in Karuizawa, Nagano, the Ministry of the Environment, Japan (MOEJ) officially launched the Asia-Pacific Climate Change Adaptation Information Platform (AP-PLAT) and held the AP-PLAT Launching Ceremony on June 16, 2019. At the ceremony, the representatives of the Government of Indonesia (G20 member) and Thailand (G20 outreach member) delivered congratulatory remarks to commemorate the establishment of the AP-PLAT. AP-PLAT was also submitted as one of the actions in the G20 Action Agenda on Adaptation and Resilient Infrastructure, which was concluded as an outcome of the G20 Ministerial Meeting.
In order to make the AP-PLAT a fruitful platform, MOEJ and NIES will continue to make the best efforts in cooperation with various partner countries and organizations.

[AP-PLAT Website](#)

(17/JUNE/2019)

Climate risk information/data: Projected rice yields (end of the 21st century)

マップ

グラフ

関連情報

表示項目

説明

1. データセット S8データ ▼
2. 分野 農業 ▼
3. 気候・影響指標 コメ収量（品質重視） ▼
4. 気候モデル MRI-CGCM3.0 ▼
5. 排出シナリオ RCP 8.5 ▼
6. 対象期間 21世紀末 ▼
7. 透過度 20 %

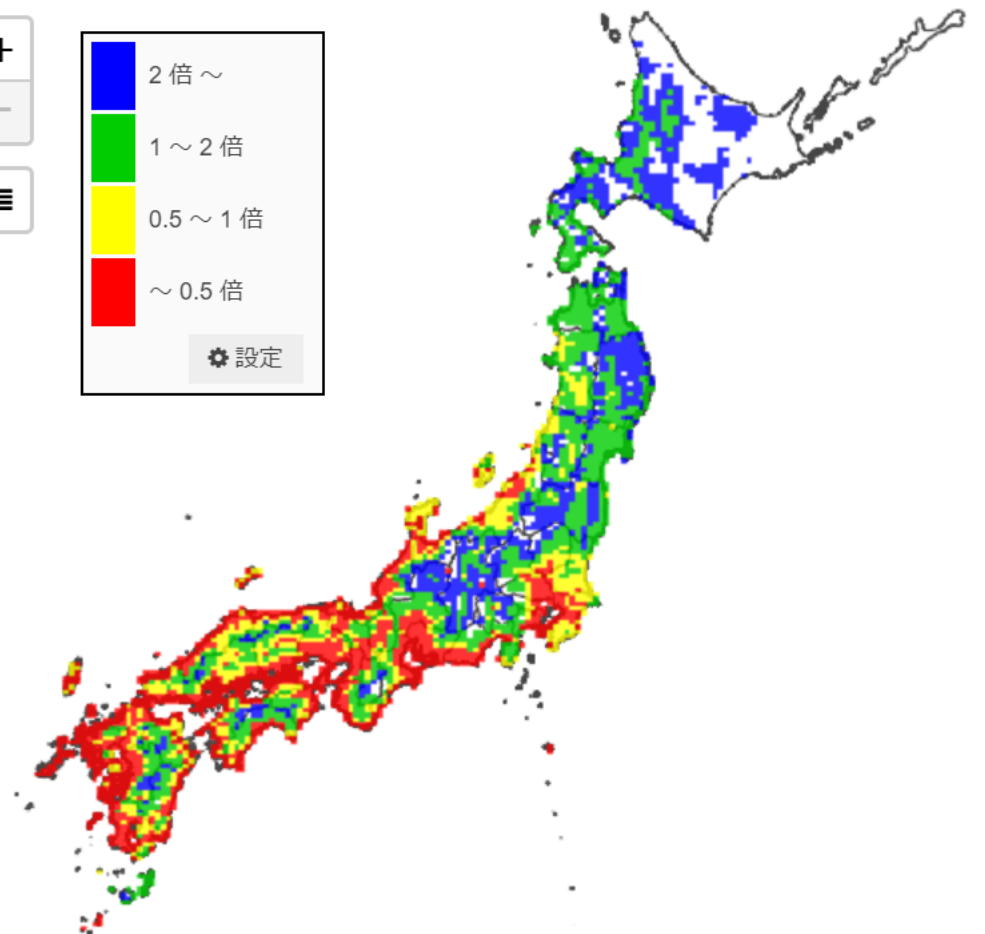
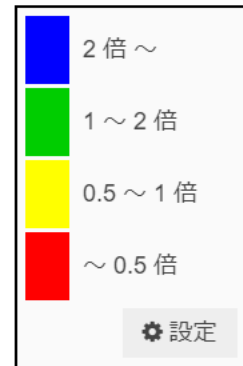
格子間隔 = 約10 km

地図情報表示

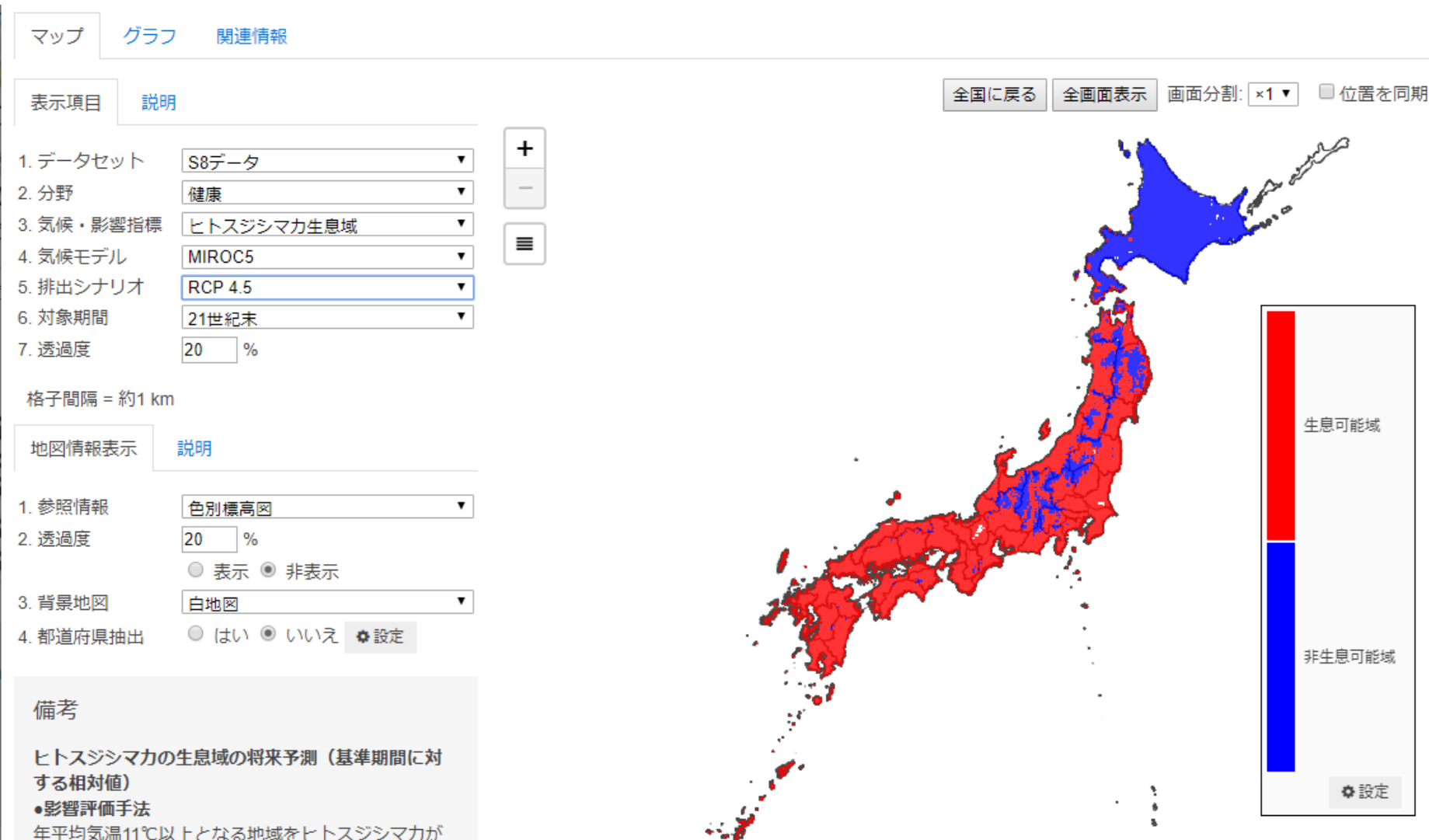
説明

1. 参照情報 色別標高図 ▼
2. 透過度 20 %
☐ 表示 ☒ 非表示
3. 背景地図 白地図 ▼
4. 都道府県抽出 ☐ はい ☒ いいえ

備考

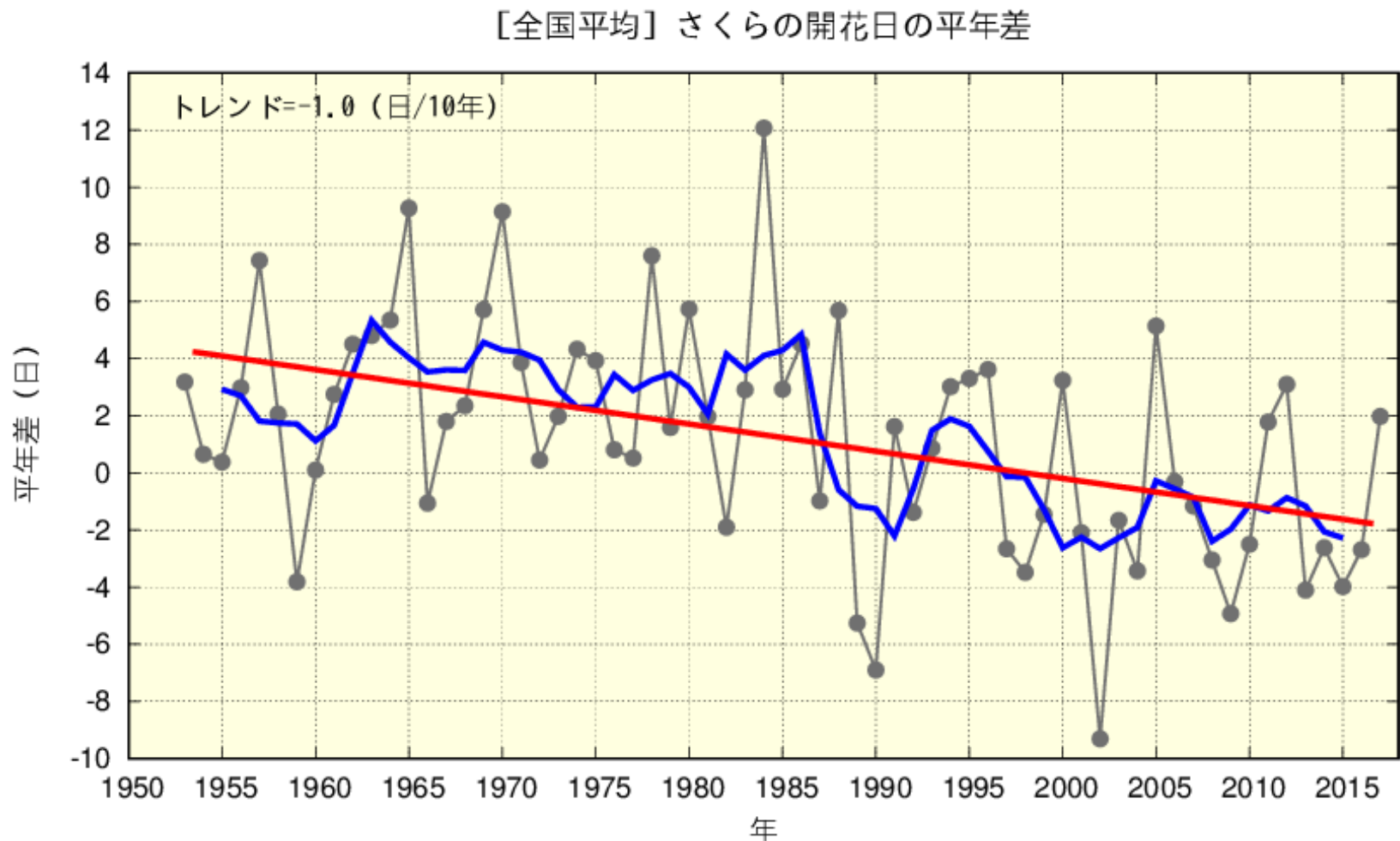


Climate risk information/data: Inhabitable area of *Aedes albopictus*



Climate risk information/data: First bloom date of cherry blossom

- Getting earlier by 0.1 day/year



Climate scenarios to go

[ABOUT US](#)[DATA SERVICE ▾](#)[ACTIVITIES](#)[PUBLISHES](#)[CHINESE](#)

Data Service » Data Store

[Goods](#)[Cart \(36\)](#)

Goods

AR5 Dynamic Downscaled Data ▾

Area ▾

Precipitation ▾



Add to Cart



Under development

TCCIP 氣候變遷資訊與適應知識平台
TCCIP Climate Change Information and Adaptation Knowledge Platform

MOST 行政院國家科學委員會
Ministry of Science and Technology
NCDR 行政院國家災害防救科技中心
National Science and Technology Center
for Disaster Reduction

📍 No.200, Sec. 3, Beisin Rd., Sindian District, New Taipei City 23143, Taiwan (R.O.C.)

☎ 886-2-8195-8756

✉ tccip.office@ncdr.nat.gov.tw

2019 © All Rights Reserved. [Privacy Policy](#) | [Terms of Use](#)

About us

The Taiwan Climate Change Projection Information and Adaptation Knowledge Platform (TCCIP) coordinated by National Science and Technology Center for Disaster Reduction (NCDR) is one of three major climate change projects funded by Ministry of Science and Technology. The TCCIP project not only produces climate change data for impact assessments and adaptations but also aims to support national adaptation policy framework.

Workshops, seminars, events, etc.

- Workshop on how to develop LCCAP
- Symposium on climate risks in private sector
- Meeting with local government staff engaged in adaptation
- Independent meetings with each LCCACs
- Meeting with other national platform managers etc.




2018. 12. 5 Meeting with local governments

Interview with local governments and LCCACs

- We have added in A-PLAT:
 - The reports of the interviews
 - Presentation materials on climate change adaptation
 - Case studies of adaptation measures by local governments

Interview

HOME > Interview > Local Interview



Becoming a Carbon-Free Society Through Mitigation and Adaptation

Local Interview : Volume.1 Tokushima Prefecture

Incorporating mitigation and adaptation into a plan

In January 2017, the Tokushima prefectural government became the first government entity in Japan to enact a carbon-free ordinance that introduces a full range of adaptation measures. One of the major initiators, Masaji Fujimoto, former manager of the Environmental Capital Section in the prefectural government, developed adaptation measures from scratch, and then formulated mitigation measures, ultimately establishing an incorporative plan in less than two years. The question is how the fast-acting, trailblazing action plan was accomplished. We interviewed the former and current managers of the Environmental Capital Section about the plan.

A-PLAT
気候変動適応情報プラットフォーム

ABOUT リンク集 海外情報 ツール English
Google カスタム検索

HOME > 気候変動と適応 > 適応策データベース

適応策データベース

気候変動適応の事例集です。自治体・機関・民間事業者等による適応策事例を適応各分野別にご紹介します。全国及び世界の適応のケーススタディを見てみましょう。

分野別影響 & 適応

- 農業・森林・林業・水産業
- 水環境・水資源
- 自然生態系
- 自然災害・沿岸域
- 健康
- 産業・経済活動
- 国民生活・都市生活

地域別

- 全国
- 北海道・東北地区
- 関東地区
- 中部地区
- 近畿地区
- 中国四国地区
- 九州・沖縄地区
- 海外

関連メニュー

- 地域適応コンソーシアム事業
- 分野別影響 & 適応
- 地域適応コンソーシアム事業 参加者・関係者専用ページ
- 地方公共団体会員ページ

日傘男子の普及啓発活動
健康, 国民生活・都市生活

暑さ対策技術の効果検証と体験の実施
健康, 国民生活・都市生活

公民連携で「かもめタウン」を活用した熱中症注意喚起
健康, 国民生活・都市生活

学校教育での暑さ対策の理解の促進
健康, 国民生活・都市生活

GoodBerry

CCCA's collaboration with LCCAC: Data sharing through web-based GIS

Collect and survey data

Share and integrate

Communicate on the web

LCCAC



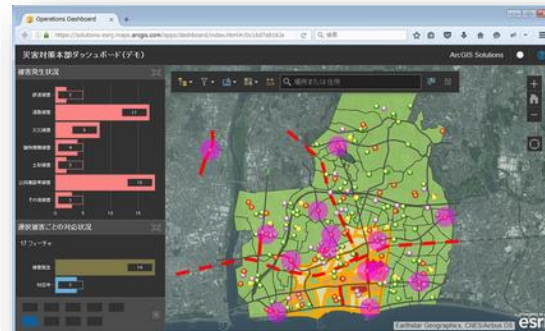
②

CCCA

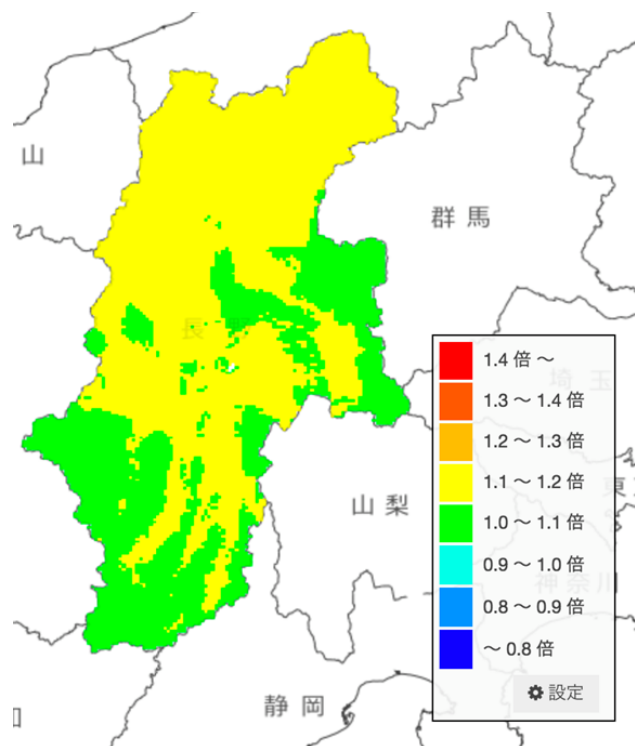


①

LCCAC



CCCA's collaboration with LCCAC: Data distribution to LCCACs



Estimation of
future precipitation
per a year
according to each RCP

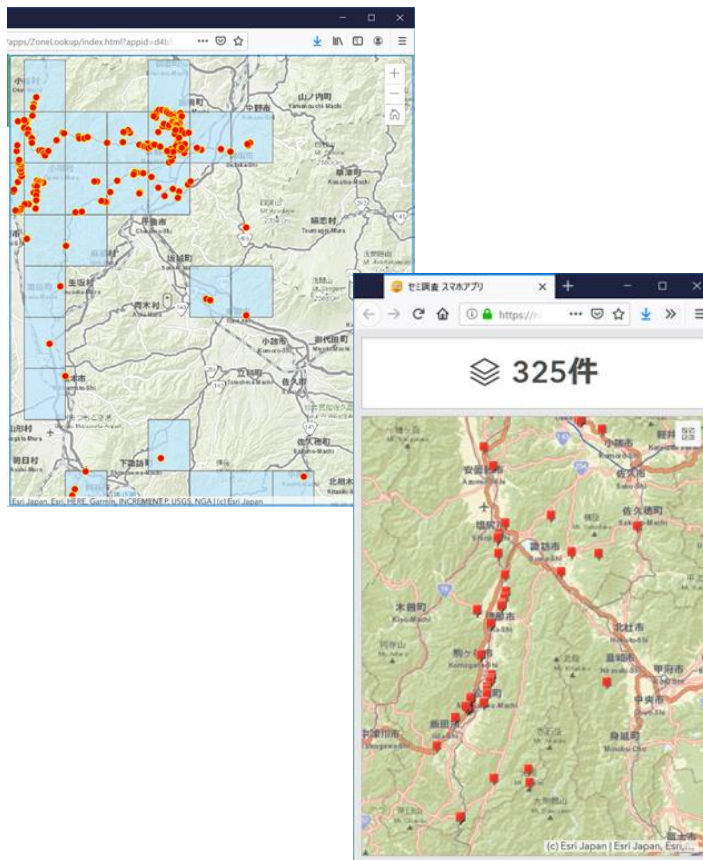
出典：環境省 気候変動適応情報プラットフォームポータルサイト (<http://a-plat.nies.go.jp/webgis/nagano/index.html>) 平成29年5月2日に利用
気候モデル：MIROC5、シナリオ：RCP8.5、対象期間：21世紀末（2080年～2100年）、基準期間：1981～2000年

From the website of a LCCAC (Local Climate Change Adaptation Center in Shinshu)

**Research findings of national projects are disseminated to
local residents through LCCACs**

CCCA's collaboration with LCCACs: Integrating regional research and activities

From LCCAC to CCCA



CCCA will survey and integrate climate change impacts by region

CCCA's collaboration projects with LCCAC

A) Dissemination program

- Workshops for the general public on climate change
- Workshops specializing in adaptation plan formulation
- Provide opportunities to share information among local governments and LCCACs.

B) Support research and study

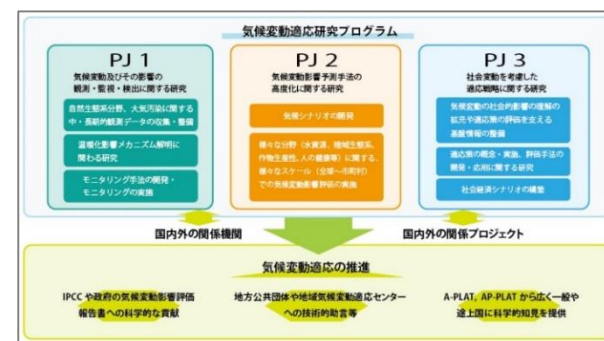
- Arrange system of research that regional adaptation center can participate in
- Advice on the application for external research funds
- Introduce research institutions and researchers that LCCAC can cooperate with

C) Support regional adaptation centers' activities

- Specialized workshops necessary for study and research
- Introduce strategies of other regional adaptation centers
- Support in strengthening collaboration between departments
- Support in strengthening networks among LCCACs
- Organize adaptation related information of relevant government agencies



*Local government officers Workshop
(December 5, 2018)*



Climate change adaptation research program
(<http://ccca.nies.go.jp/ja/program/index.html>)

Blue: already started

D) Collect and distribute scientific knowledge

- Provide data of observed and projected climate/impacts
- Support in collecting general information related to climate change

E) Develop tools

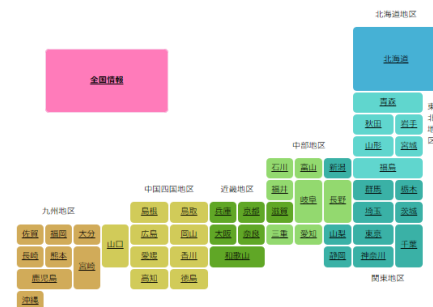
- Support in offering information on climate change and the impacts using GIS software
- Support in creating website contents of climate change impacts
- Provide educational leaflet templates

F) Support in developing documents

- Organize general data on climate change
- Provide explanatory materials for stakeholders
- Provide photos and illustrations regarding climate change
- Presentation materials which can be handled by elementary school students as free research (climate change related)

観測された気候とS-8による研究成果

S-8 温暖化影響評価・適応政策に関する総合的研究
ご利用の手引き | 影響評価のQ&A
ここで示すデータは、アメダスで観測されたデータ及び「気候変動影響評価総合データベース」温暖化影響評価・適応政策に関する総合的研究」における研究成果に基づいたものです。S-8の詳細については、こちらの報告書をご参照ください。



WebGIS page in APLAT
(<http://a-plat.nies.go.jp/webgis/index.html>)



A-PLAT brochure
(<http://www.adaptation-platform.nies.go.jp/info/pamphlet.html>)

Summary

- Since its establishment, CCCA has been actively collaborating with users, particularly local governments
- Capacity building workshops and seminars started this spring, mainly for officers of LCCACs
- Official occasions indicate general direction of A-PLAT development while daily communication among staff members provide inputs for the contents
- Engagements with private sectors and the general public will be strengthen in near future